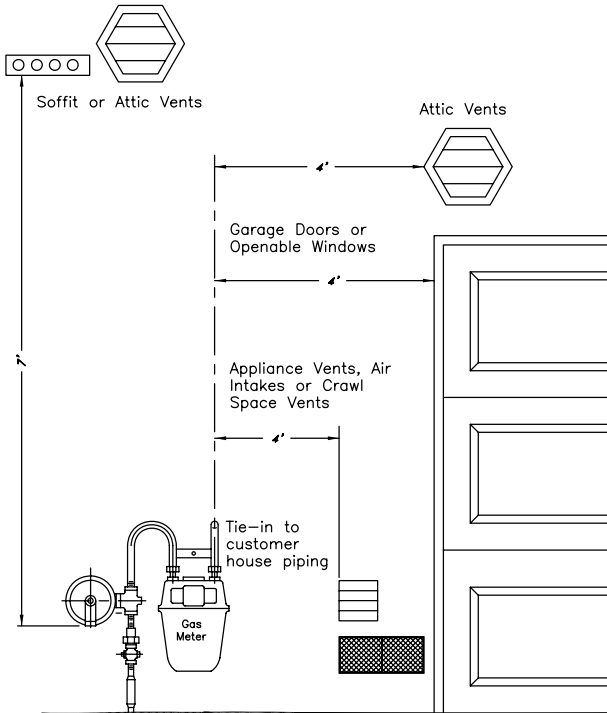
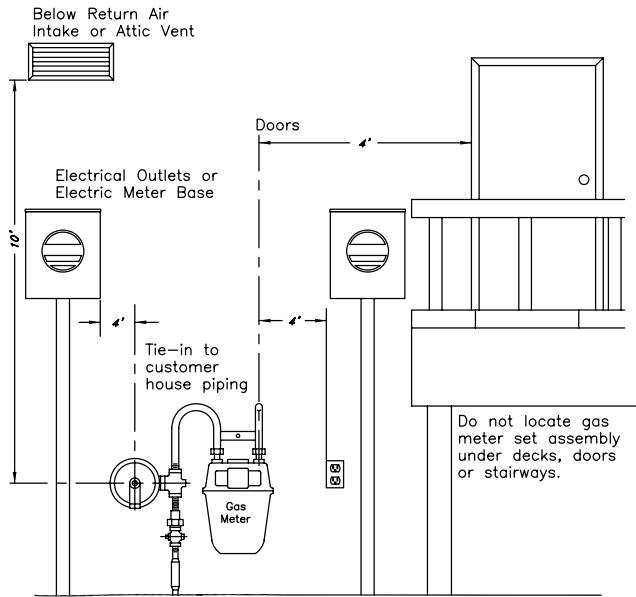


## Gas Meter Clearances

Maintain a perimeter of 3' min. from any obstruction (Tree, shrub, fence, etc.)



## Conduit Requirements

Use of a Conduit must be pre-approved by CNG.

1. Conduit placement must meet depth and separation requirements.
2. Conduits must be 2" (minimum) schedule 40, yellow PVC. 4" conduit for 2" gas lines. May be yellow (preferred) or white.
3. Conduit ends should be left exposed. Stake ends with yellow stakes. Sand bedding required at tie-in location and at riser location.
4. Conduits must be at least 3'-5' from the end of the existing stub or main. Conduit should end a minimum of 5' from any structure wall.
5. Conduits over 40' in length will require 3/8" minimum diameter pull rope.

CNG will set a meter if:

1. House piping is tied into meter bar. See minimum clearances.
2. Dealer/customer calls for meter set assembly (credit/billing information required). Dealer/Customer need not be present for meter to be set.

CNG will not set a meter if:

1. House piping is not tied into meter bar.
2. Meter Bar is not level once connected to house piping.

Contact 1-888-522-1130  
"option 5 and 1" when ready for  
a meter to be set.

Cascade Natural Gas Corporation and your local district office may alter these policies at any time.  
CNG 645-A Version 2.0 OR

*Oregon*

*Construction Service  
Requirements*



Questions? Please contact  
1-888-522-1130 "option 5 and 1".

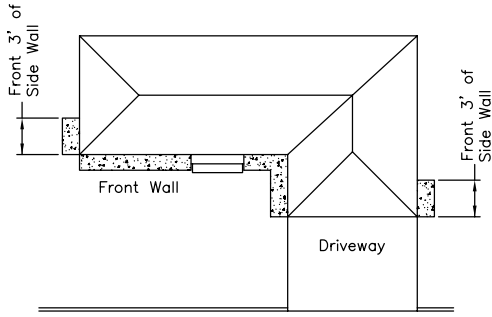


Call at least 48 hours prior to digging:  
811 or 1-800-332-2344

www.cngc.com

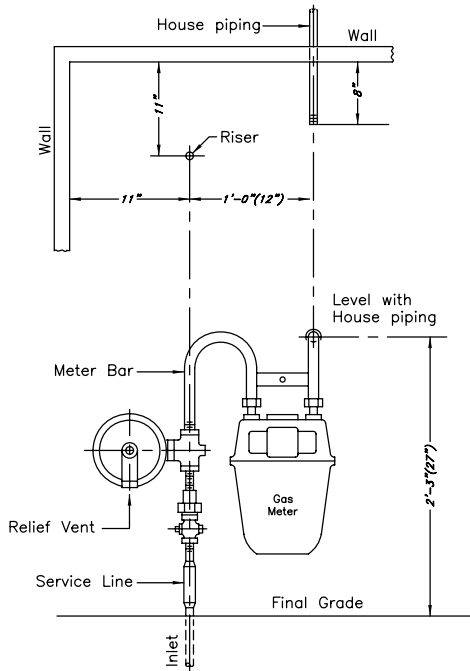
## Gas Meter Locations

Gas meters shall be located on the front wall or within the front 3' of the side wall unless the gas meter clearances required below cannot be met.

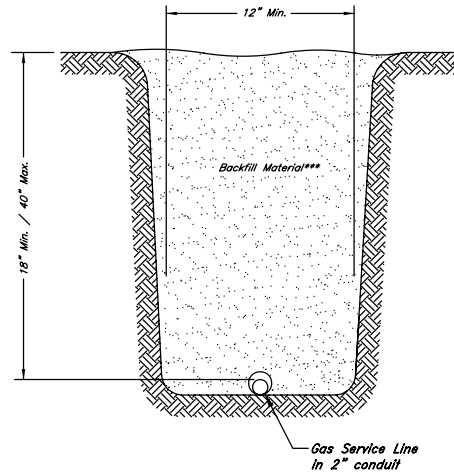


Street Right of Way

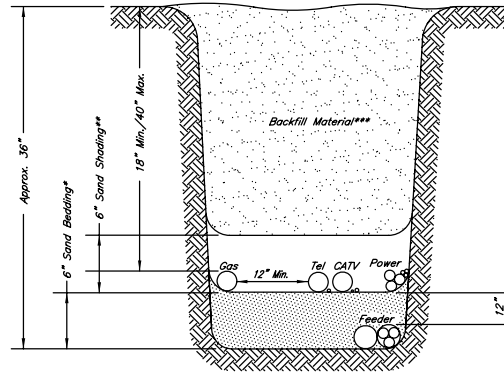
## Minimum Clearances



## Conduit Installations



## Direct Burial Installations



Note: Gas may be placed on a level above all other utilities provided 12" vertical separation is maintained and 18" minimum cover.

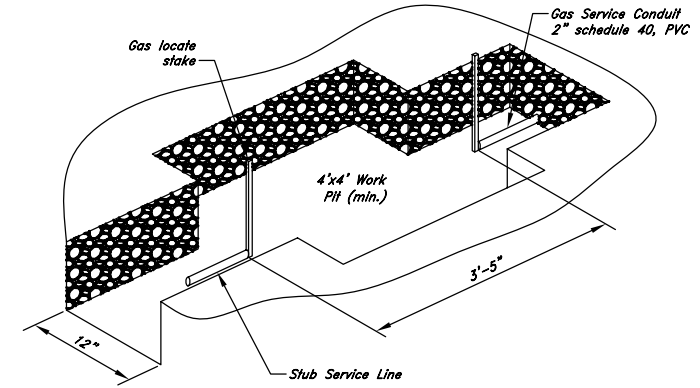
\* Sand placed on the bottom of a trench or work pit containing direct buried or exposed facilities.

\*\* Sand placed on top of direct buried or exposed facilities in the trench or work pit.

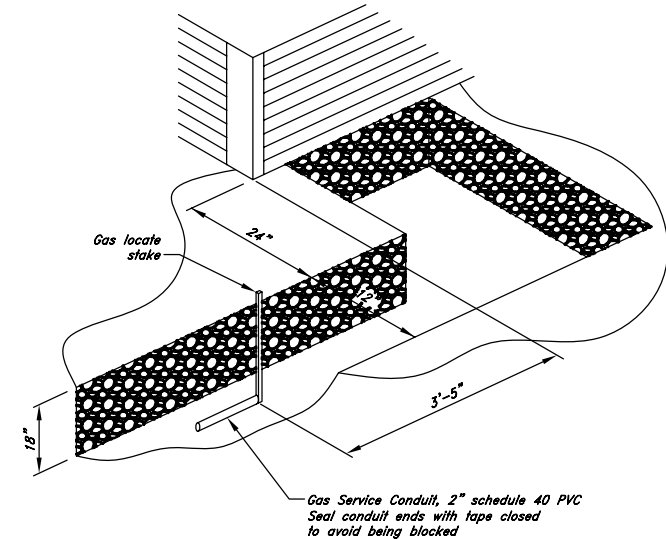
\*\*\* Soil that is free from debris, sharp rocks and rocks larger than 10" diameter. Backfill shall not damage the conduit.

## Termination of Conduit

"at stub service line"



"at building"



1. Conduit bends shall be long radius sweeps. (2" min.) Schedule 40 Yellow PVC shall have a minimum 28" radius. No fittings allowed in conduit.
2. The sum total degrees of bends in the conduit run cannot exceed 180°