



Contributions to the Winter Help program are accepted and appreciated all year long.

Visit our Assistance Programs webpage for the form to sign up to have a monthly pledge amount automatically added to your bill.



To mail a contribution, send to:

Cascade Natural Gas
Winter Help
8113 W Grandridge Blvd
Kennewick, WA 99336

For a list of Community Action agencies:

www.cngc.com/low-income-assistance-programs.

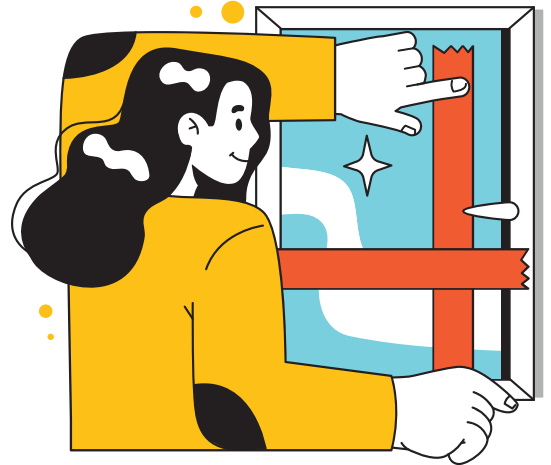
Customer Service

Monday-Friday, 7:30 a.m. to 6:30 p.m.

888-522-1130

KEEP HEATING BILLS UNDER CONTROL THIS WINTER

Cascade Natural Gas Corporation and our community partners offer assistance programs to help with natural gas bills, keeping homes warm and comfortable throughout the heating season.



Plus—Helpful energy efficiency and weatherization resources for a cozy home!



A Subsidiary of MDU Resources Group, Inc.

In the Community to Serve®

[f](#) [@](#) [t](#) [in](#) [v](#) [www.cngc.com](#)

10/2023



A Subsidiary of MDU Resources Group, Inc.

In the Community to Serve®

[f](#) [@](#) [t](#) [in](#) [v](#) [www.cngc.com](#)

ASSISTANCE PROGRAMS

TO APPLY: CONTACT YOUR LOCAL COMMUNITY ACTION AGENCY ►



WINTER HELP

This program was created in partnership with Community Action agencies and is funded by Cascade and customer donations. It is designed to help our neighbors with temporary heating emergencies. To contribute to the fund, find information on the back of this brochure.

OREGON LOW INCOME BILL ASSISTANCE (OLIBA) AND ENERGY DISCOUNT PROGRAM (EDP)

OLIBA is funded through a public purpose charge on your monthly natural gas bill. It provides additional assistance to income-qualified households that are struggling to pay their natural gas bills. EDP is available for qualifying customers to receive a discount on their bill.

CARES PROGRAM FOR WASHINGTON

The Cascade Arrearage Relief and Energy Savings (CARES) program provides qualifying customers in need of bill payment assistance with a discount on their monthly gas bill, plus help with past due balances, if needed.

LOW INCOME HOME ENERGY ASSISTANCE PROGRAM (LIHEAP)

LIHEAP is a federally funded program that provides a once-per-program-year benefit to assist with heating costs.

Assistance Programs information and Community Action agency contacts for applying for assistance are available at www.cngc.com/low-income-assistance-programs.



DIAL 2-1-1

211 is an easy to remember nationwide telephone number that provides information and referrals to health, human and social service organizations. For utility assistance or other resources **Call 2-1-1**.



DEPT. OF ENERGY WEATHERIZATION ASSISTANCE PROGRAM

The Home Energy Saver is designed to help consumers identify the best ways to save energy in their homes and find resources to make the savings happen. Visit homeenergysaver.lbl.gov.



HOME ENERGY EFFICIENCY RESOURCES

Find home winterization resources and energy saving tips at our webpage: www.cngc.com/energy-efficiency.



BUDGET PAYMENT PLAN

Cascade's Budget Payment Plan helps you budget your energy expenses by leveling monthly amounts throughout the year, as opposed to paying larger bills in the heating season when you use more natural gas. Visit online: www.cngc.com/budget-pay-plan.



In the Community to Serve®