

Appendix J

Bill Impact Analysis

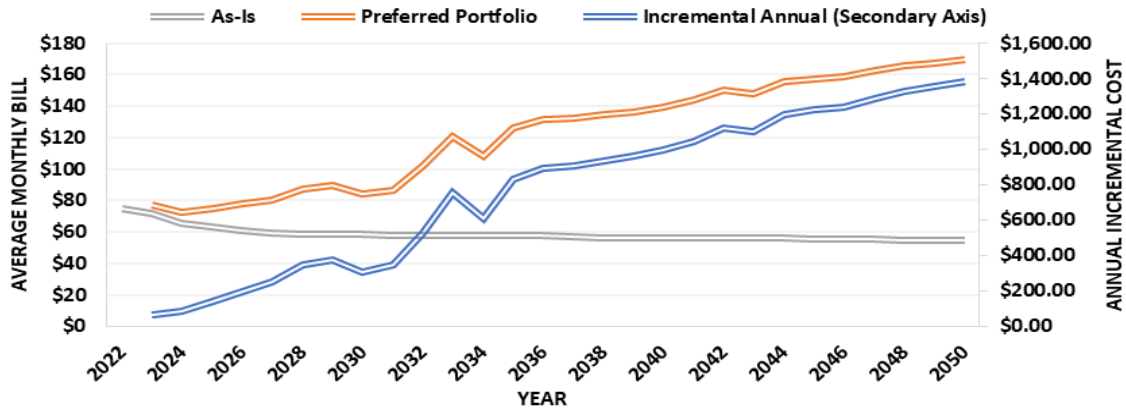
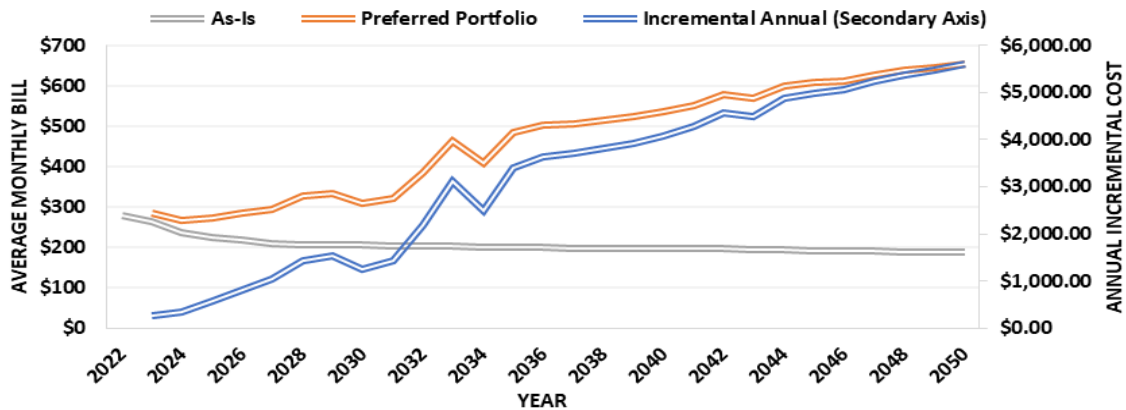
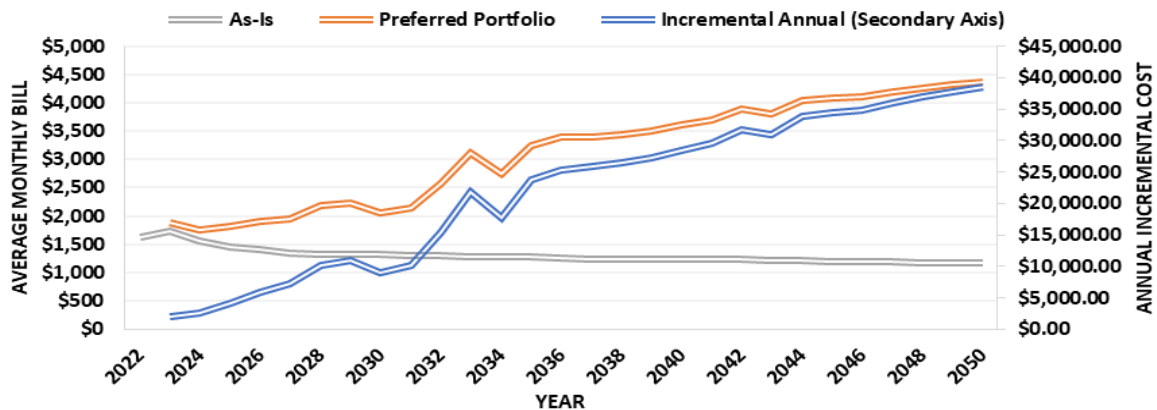
2023 OR IRP

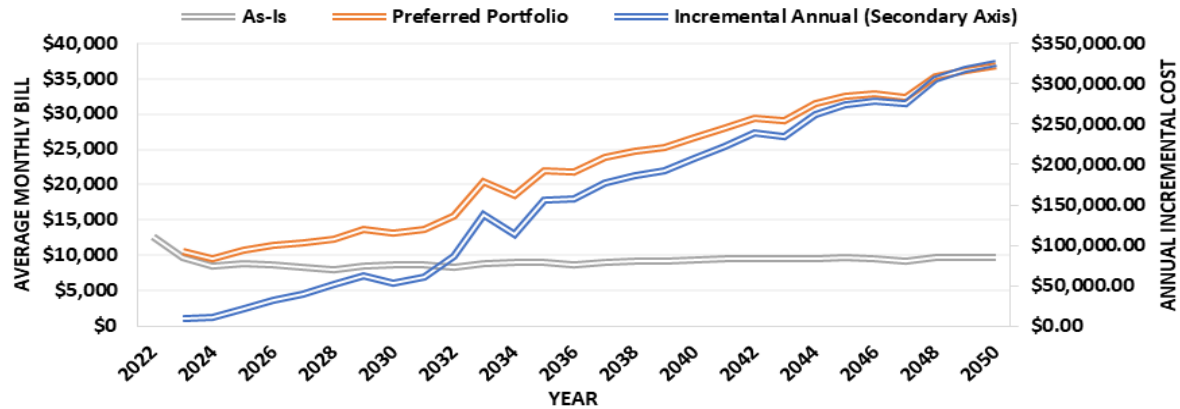
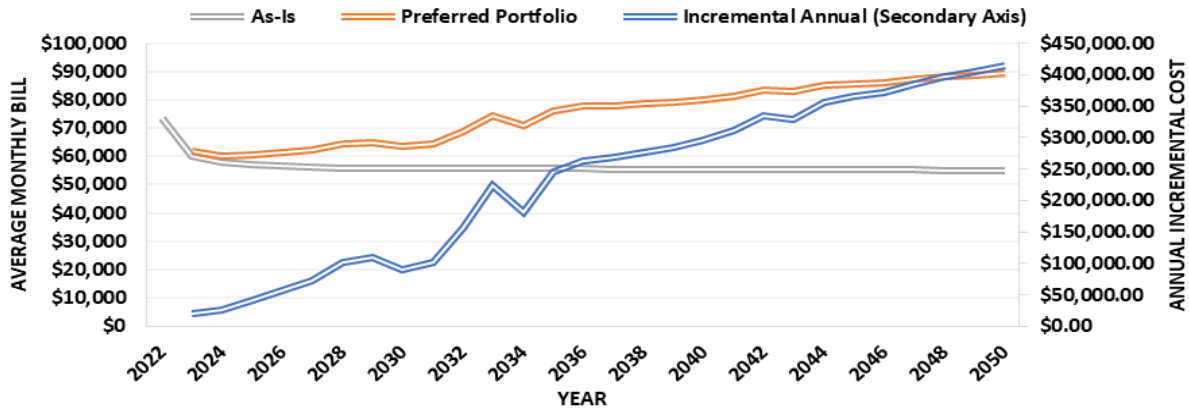
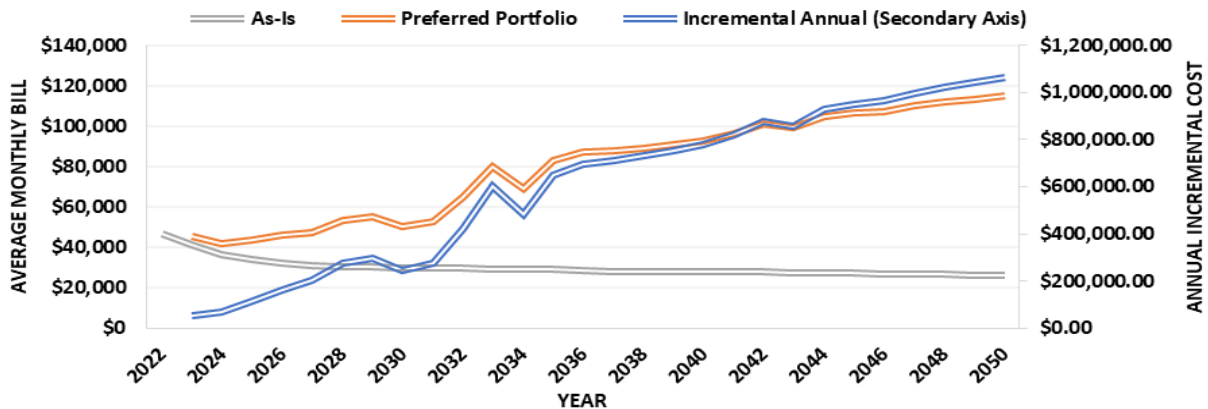
Appendix J – Introduction

The purpose of this appendix is to provide estimated bill impacts to customers based on Cascade's scenarios that are described in Chapter 9. Each bill impact analyzes estimated customer bills by rate schedule and compares as-is versus the scenarios. These customer bill impacts represent Cascade's best estimate about future events. At this time, several important factors make calculating bill impacts particularly difficult such as – continued economic growth, carbon legislation, building code changes, direct use of natural gas campaigns, energy efficiency, and long-term weather patterns. The range of scenarios presented here encompass the full range of possibilities through econometric analysis. As a result, while Cascade believes the numbers presented here are accurate and that the scenarios presented represent the full range of possibilities, there are and always will be uncertainties in forecasting future periods.

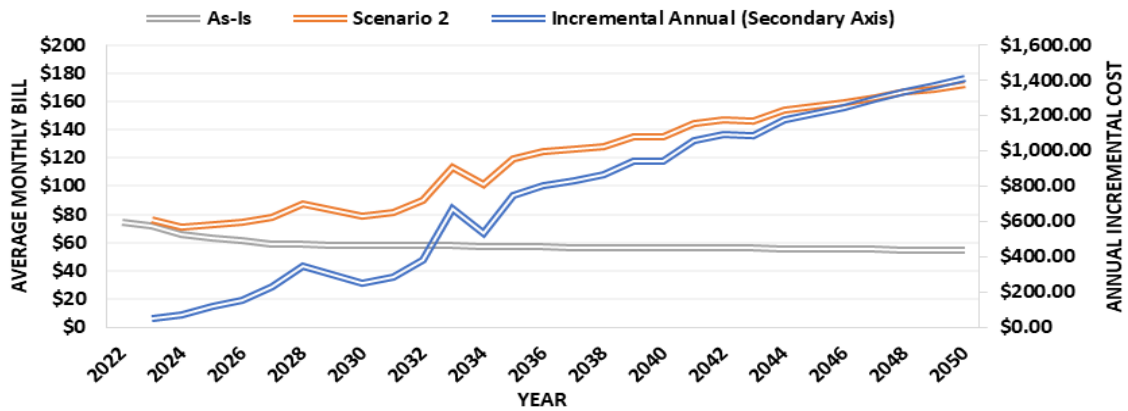
A remind as to what all encompasses these scenarios, please refer back to Chapter 9, beginning on Page 9-28.

Marginal Abatement Cost Curves (MACC) results can be found on Page 15 and 16 of this appendix. For a description of MACC, please see page 9-25.

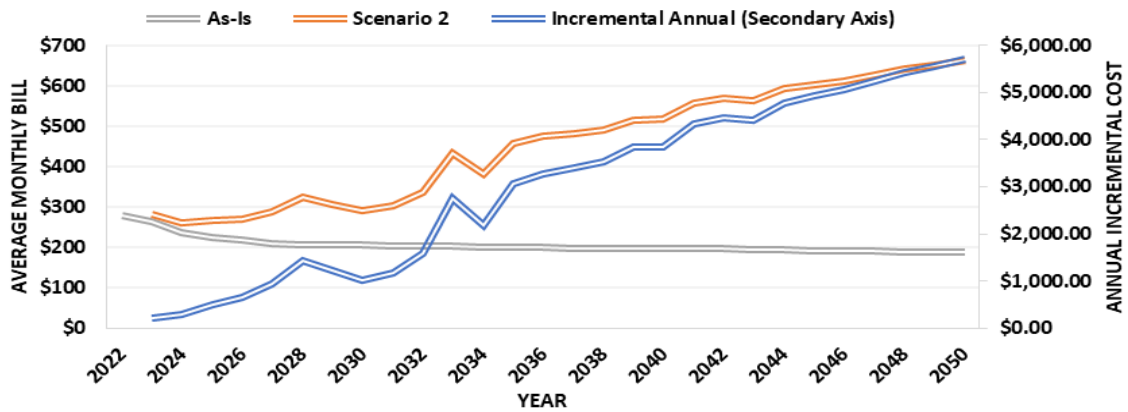
AVG BILL OF CLASS OR101 COMPARING 'AS-IS' VS 'PREFERRED PORTFOLIO'**AVG BILL OF CLASS OR104 COMPARING 'AS-IS' VS 'PREFERRED PORTFOLIO'****AVG BILL OF CLASS OR105 COMPARING 'AS-IS' VS 'PREFERRED PORTFOLIO'**

AVG BILL OF CLASS OR111.COM COMPARING 'AS-IS' VS 'PREFERRED PORTFOLIO'**AVG BILL OF CLASS OR111.IND COMPARING 'AS-IS' VS 'PREFERRED PORTFOLIO'****AVG BILL OF CLASS OR170 COMPARING 'AS-IS' VS 'PREFERRED PORTFOLIO'**

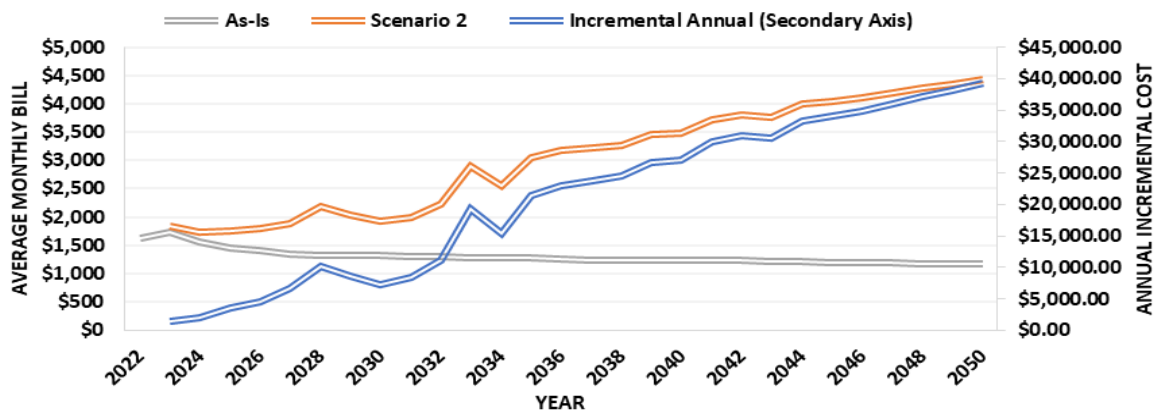
AVG BILL OF CLASS OR101 COMPARING 'AS-IS' VS 'SCENARIO 2'

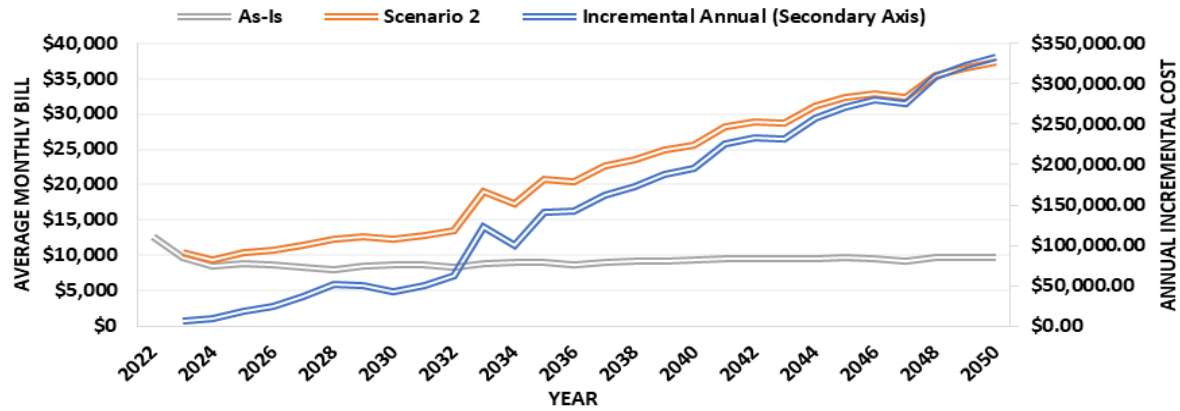
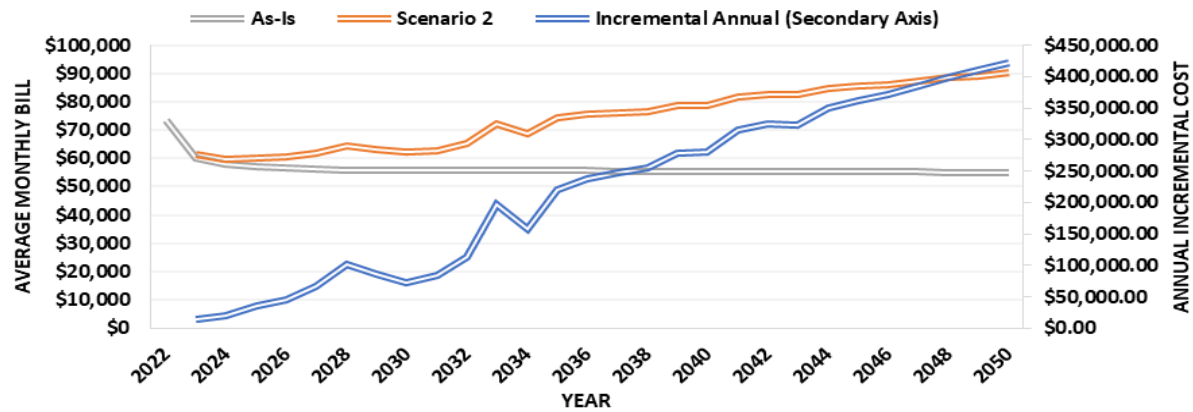
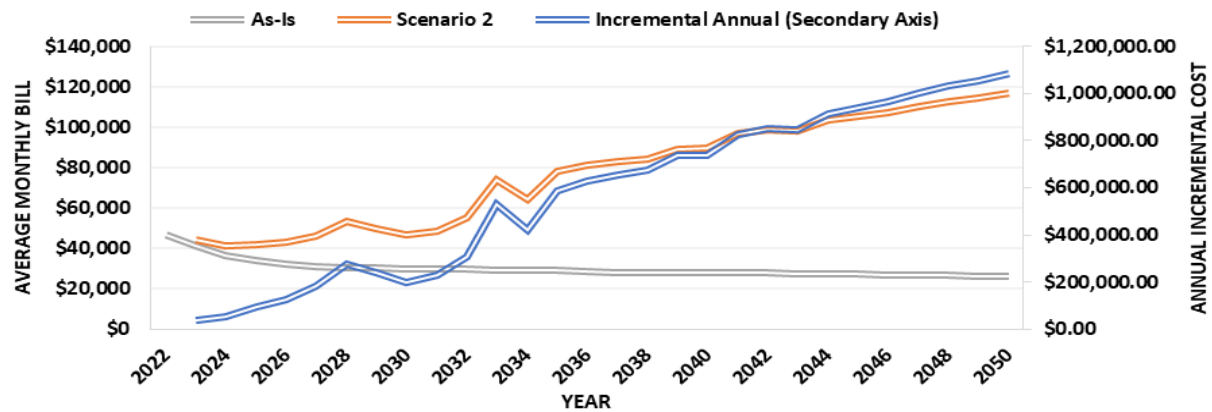


AVG BILL OF CLASS OR104 COMPARING 'AS-IS' VS 'SCENARIO 2'

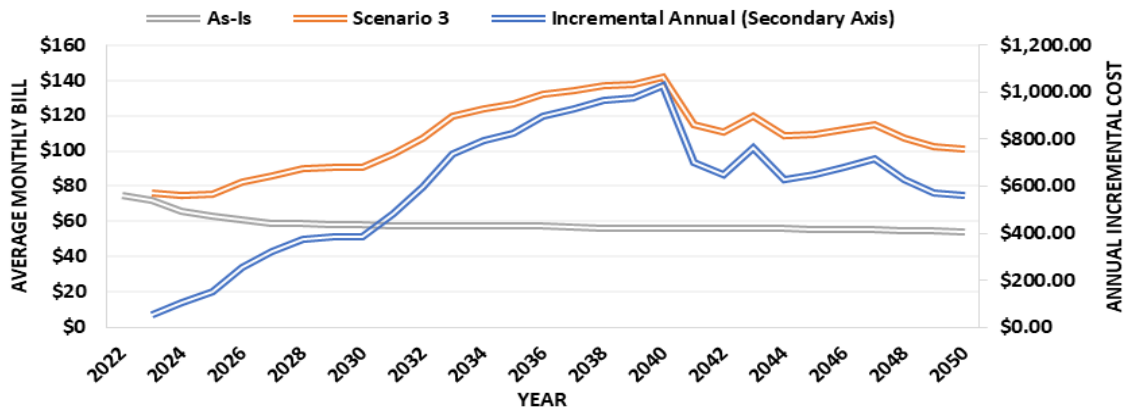


AVG BILL OF CLASS OR105 COMPARING 'AS-IS' VS 'SCENARIO 2'

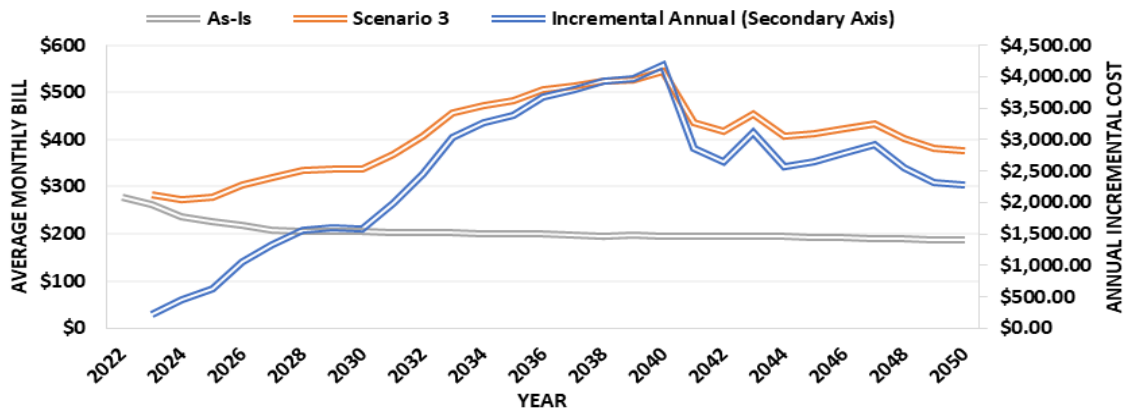


AVG BILL OF CLASS OR111.COM COMPARING 'AS-IS' VS 'SCENARIO 2'**AVG BILL OF CLASS OR111.IND COMPARING 'AS-IS' VS 'SCENARIO 2'****AVG BILL OF CLASS OR170 COMPARING 'AS-IS' VS 'SCENARIO 2'**

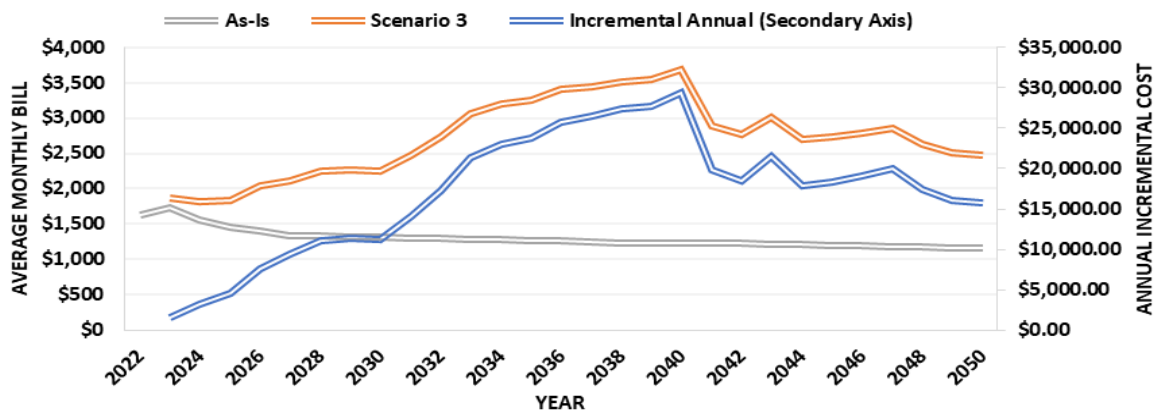
AVG BILL OF CLASS OR101 COMPARING 'AS-IS' VS 'SCENARIO 3'

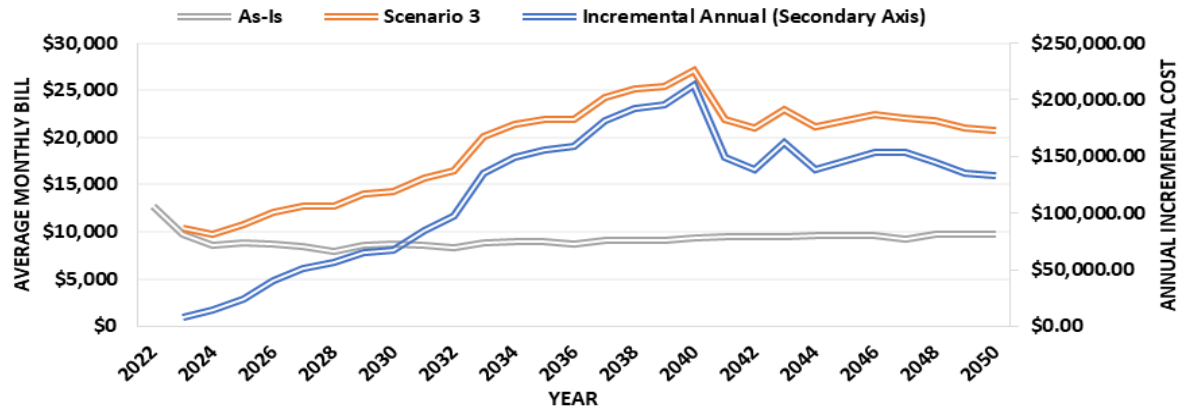
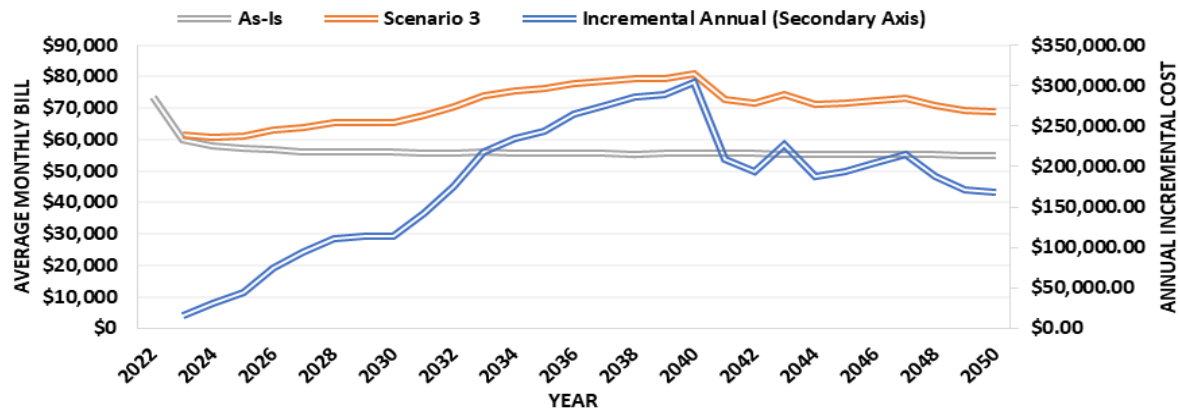
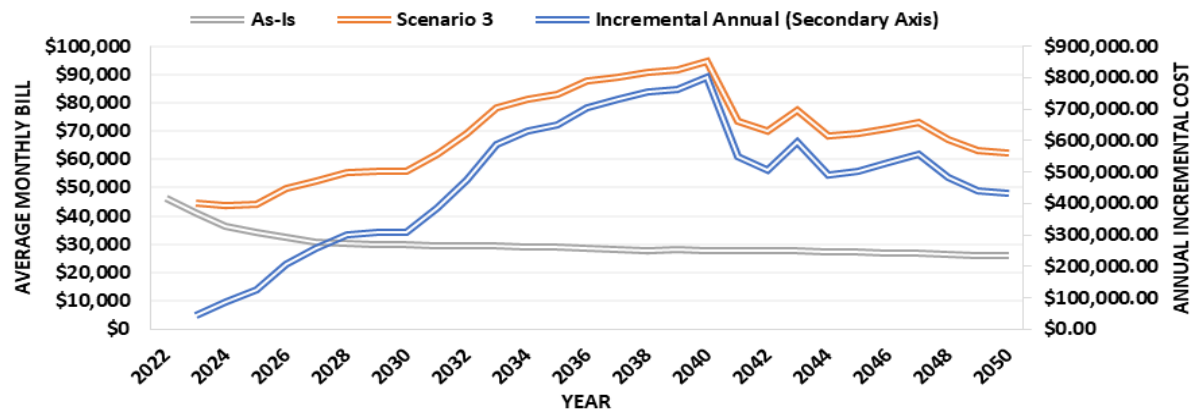


AVG BILL OF CLASS OR104 COMPARING 'AS-IS' VS 'SCENARIO 3'

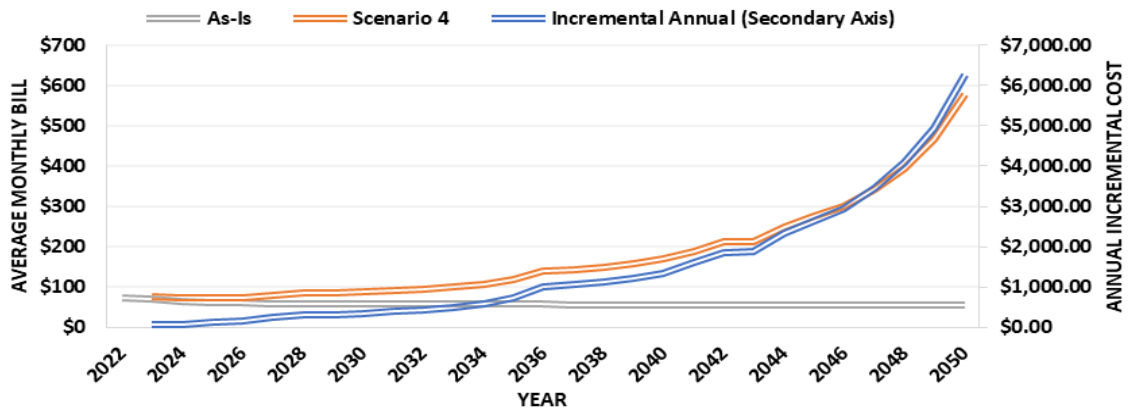


AVG BILL OF CLASS OR105 COMPARING 'AS-IS' VS 'SCENARIO 3'

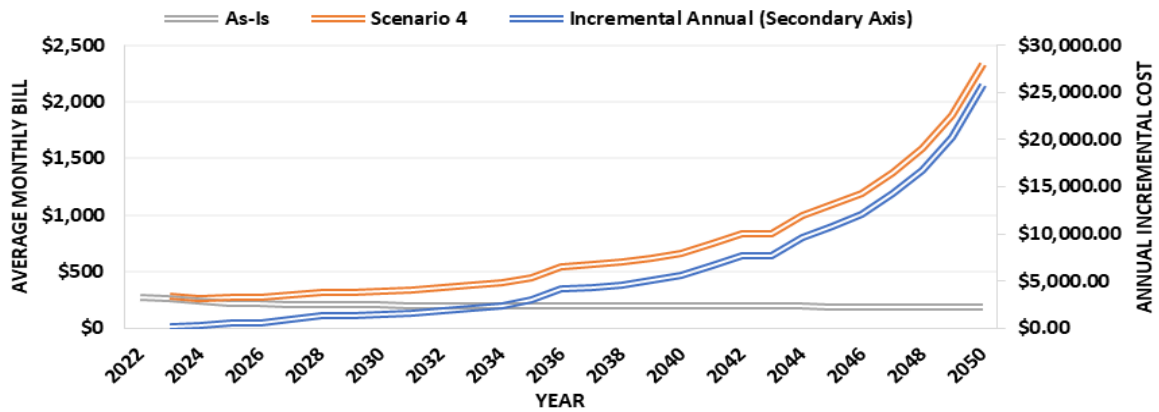


AVG BILL OF CLASS OR111.COM COMPARING 'AS-IS' VS 'SCENARIO 3'**AVG BILL OF CLASS OR111.IND COMPARING 'AS-IS' VS 'SCENARIO 3'****AVG BILL OF CLASS OR170 COMPARING 'AS-IS' VS 'SCENARIO 3'**

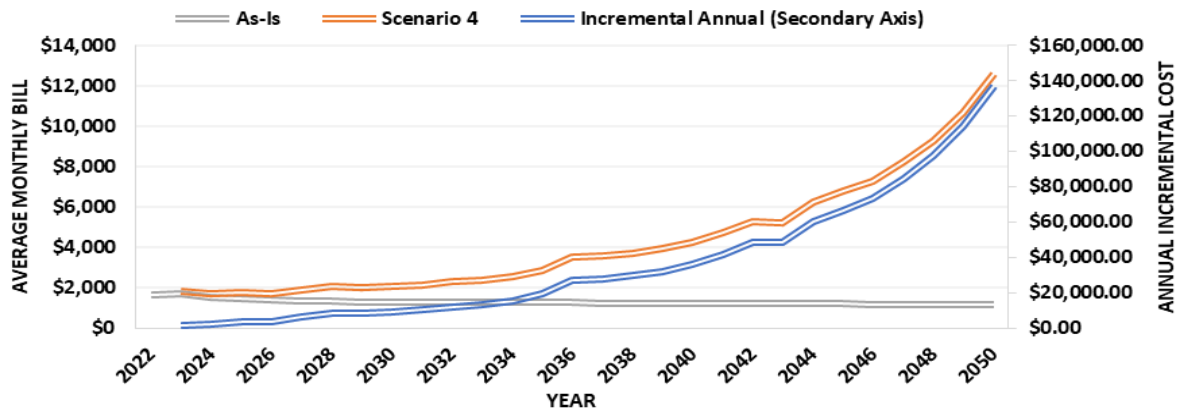
AVG BILL OF CLASS OR101 COMPARING 'AS-IS' VS 'SCENARIO 4'

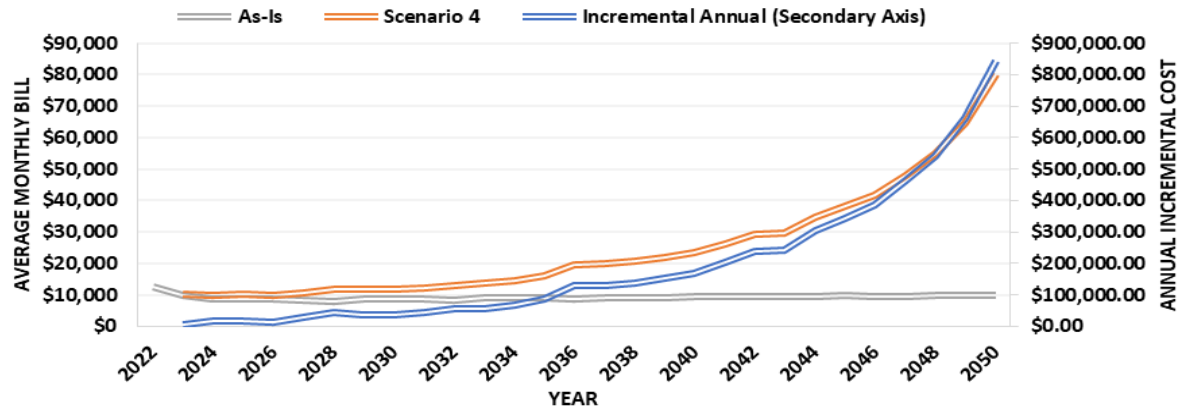
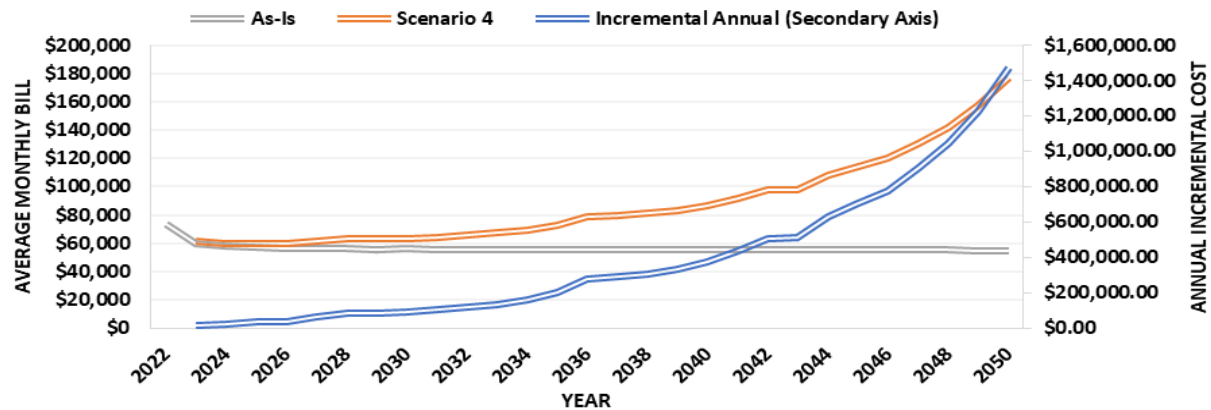
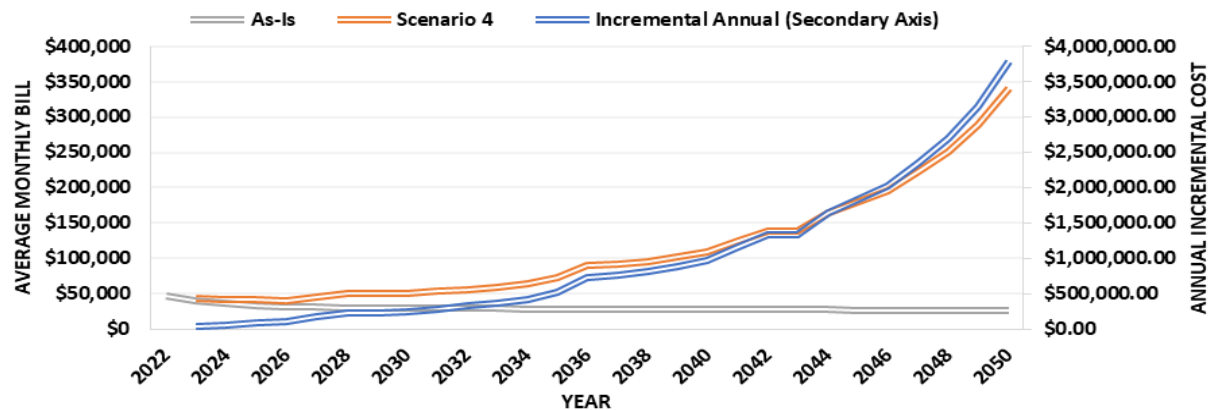


AVG BILL OF CLASS OR104 COMPARING 'AS-IS' VS 'SCENARIO 4'

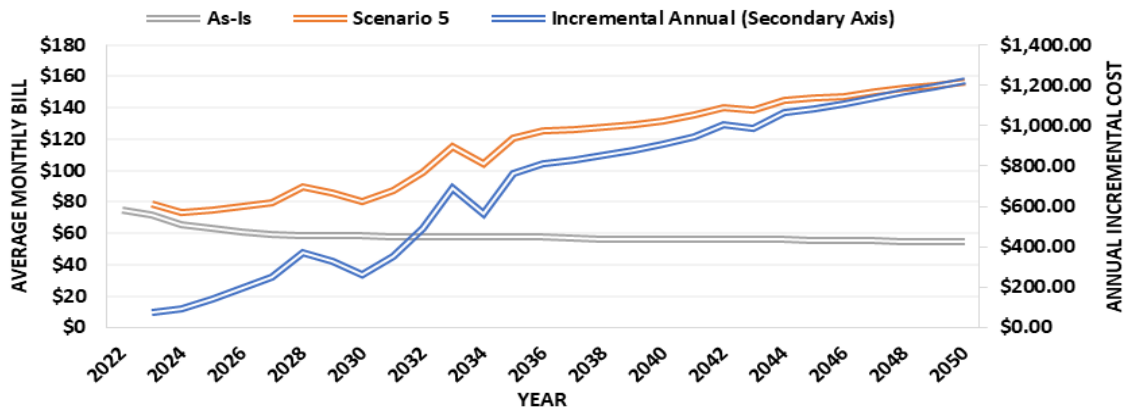


AVG BILL OF CLASS OR105 COMPARING 'AS-IS' VS 'SCENARIO 4'

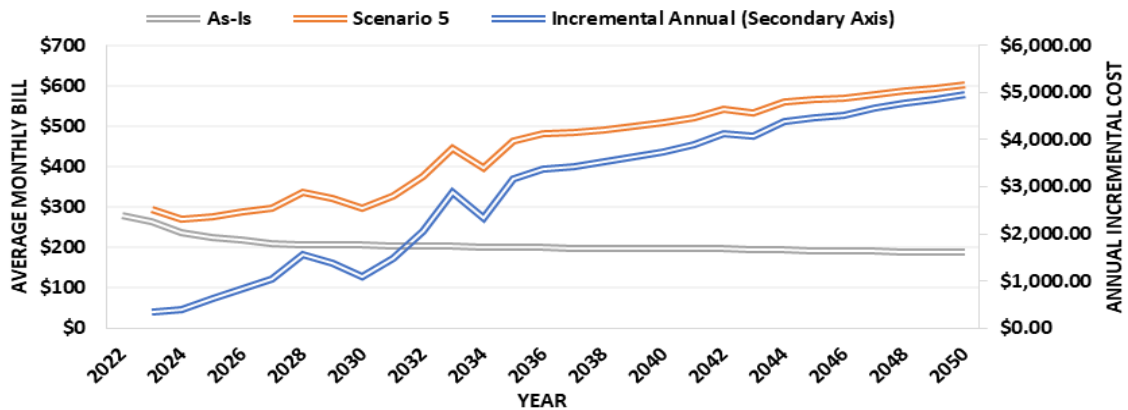


AVG BILL OF CLASS OR111.COM COMPARING 'AS-IS' VS 'SCENARIO 4'**AVG BILL OF CLASS OR111.IND COMPARING 'AS-IS' VS 'SCENARIO 4'****AVG BILL OF CLASS OR170 COMPARING 'AS-IS' VS 'SCENARIO 4'**

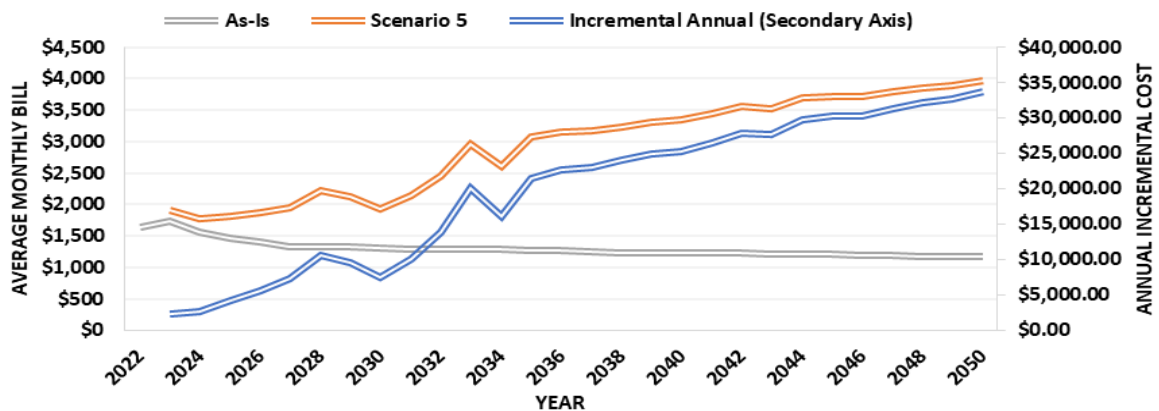
AVG BILL OF CLASS OR101 COMPARING 'AS-IS' VS 'SCENARIO 5'



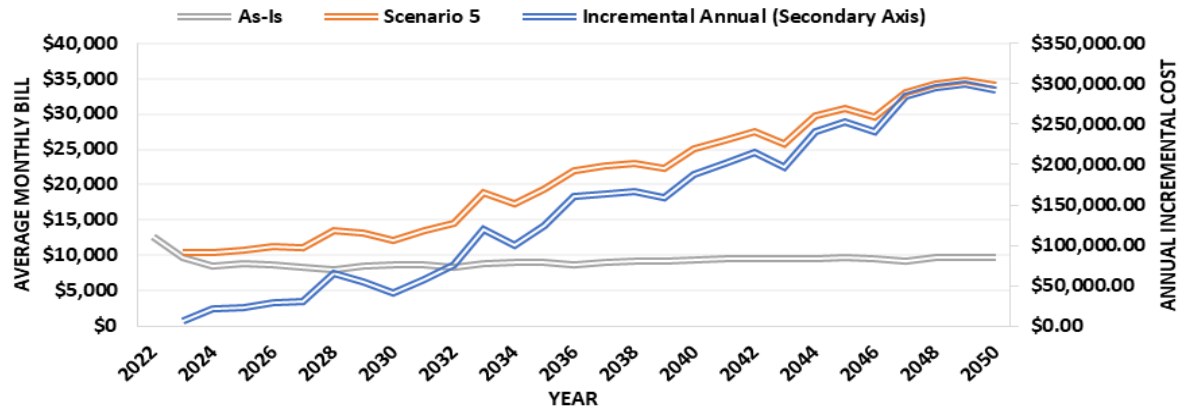
AVG BILL OF CLASS OR104 COMPARING 'AS-IS' VS 'SCENARIO 5'



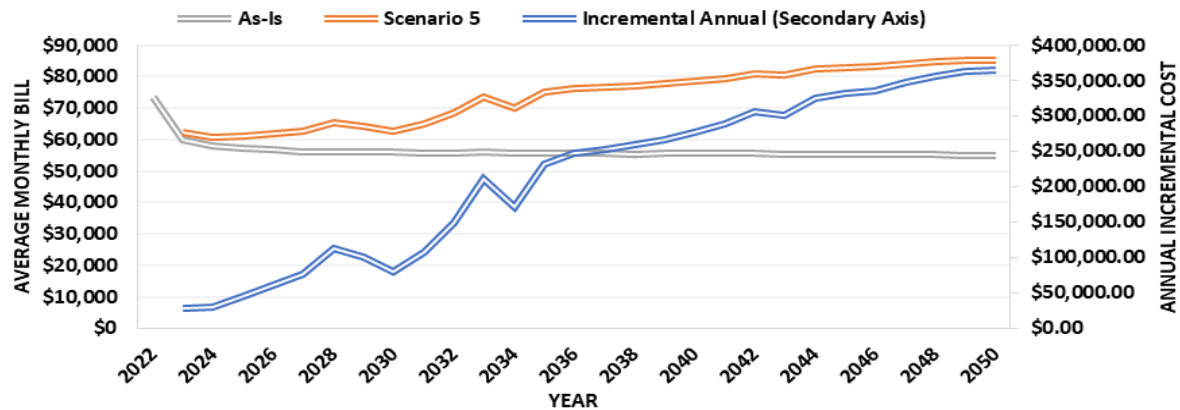
AVG BILL OF CLASS OR105 COMPARING 'AS-IS' VS 'SCENARIO 5'



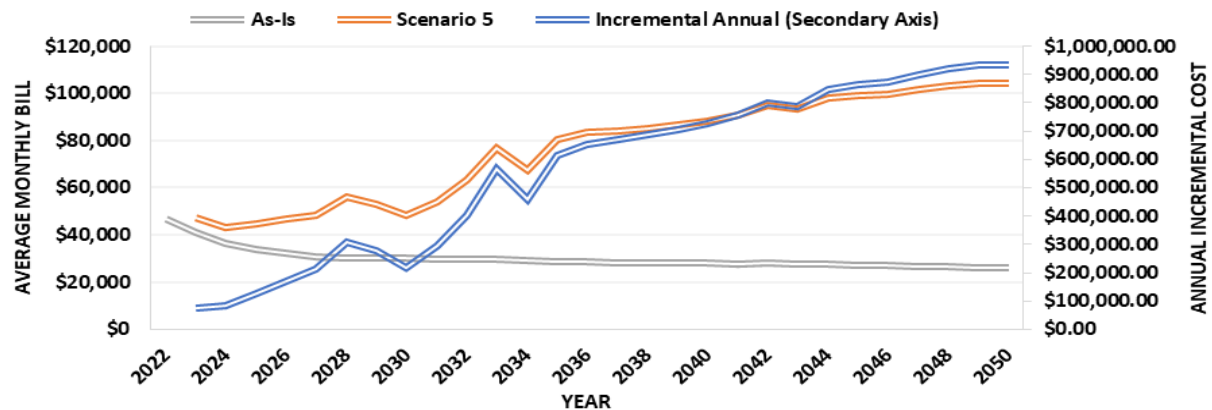
AVG BILL OF CLASS OR111.COM COMPARING 'AS-IS' VS 'SCENARIO 5'



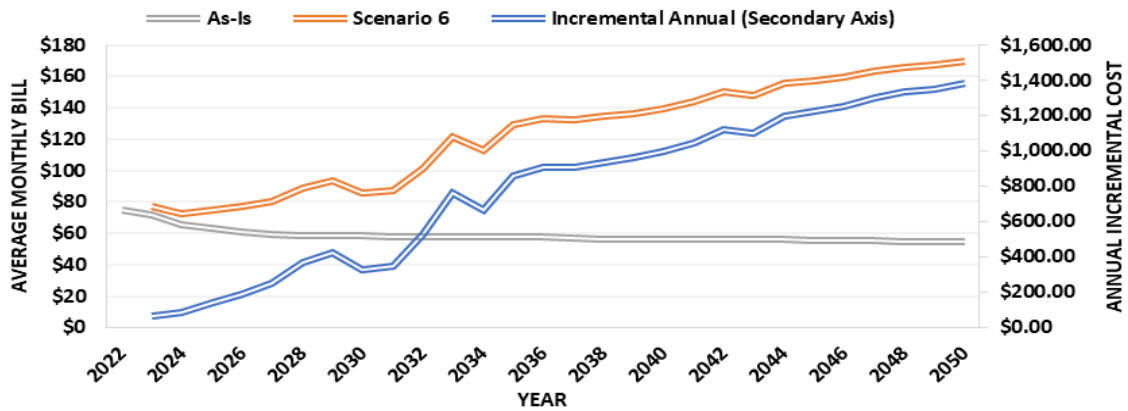
AVG BILL OF CLASS OR111.IND COMPARING 'AS-IS' VS 'SCENARIO 5'



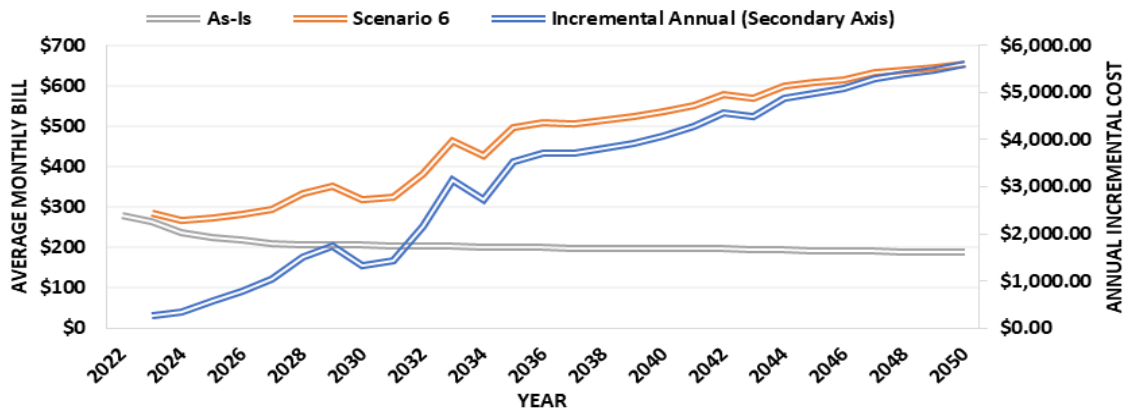
AVG BILL OF CLASS OR170 COMPARING 'AS-IS' VS 'SCENARIO 5'



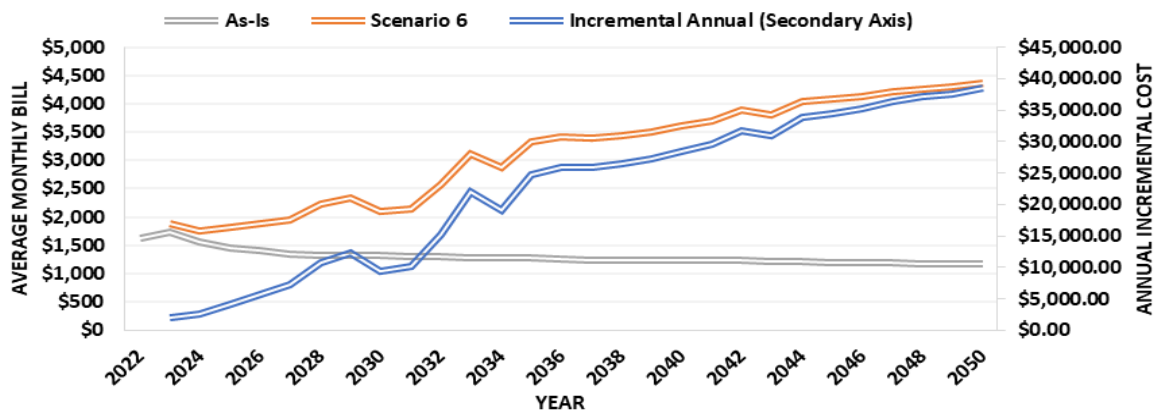
AVG BILL OF CLASS OR101 COMPARING 'AS-IS' VS 'SCENARIO 6'

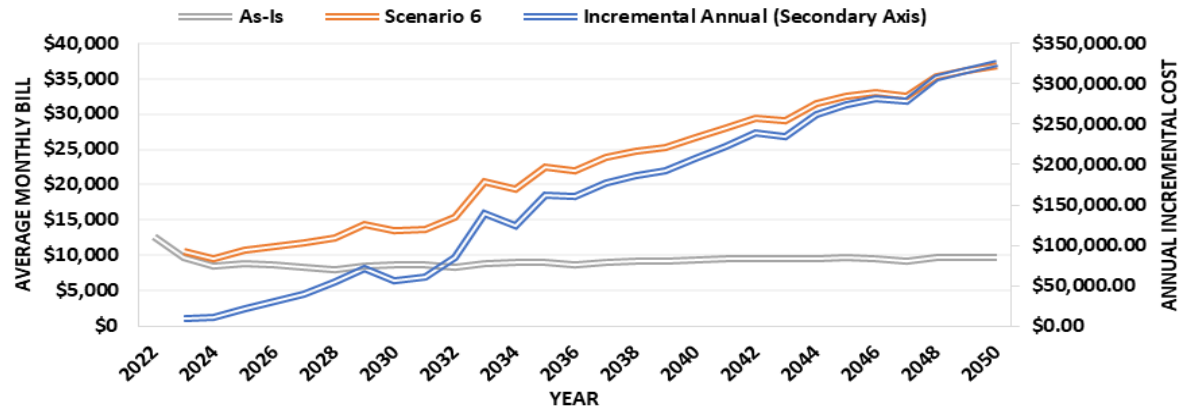
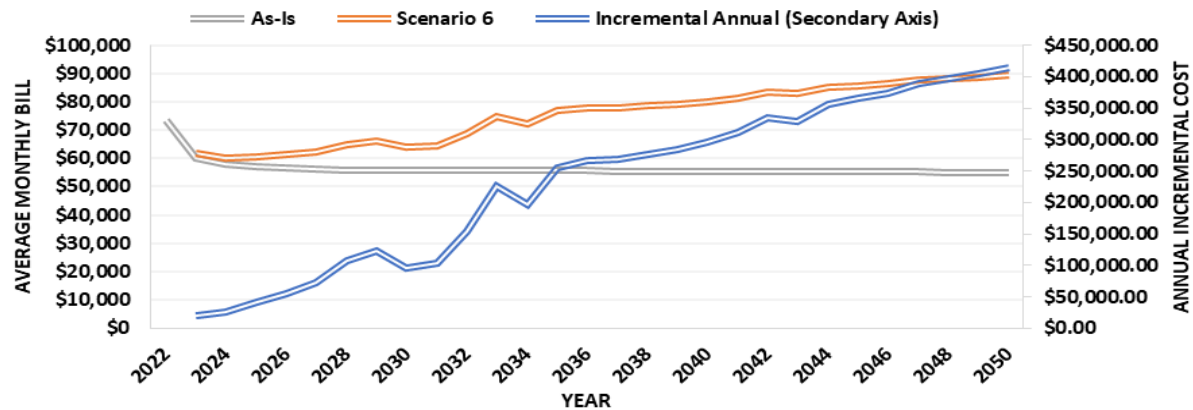


AVG BILL OF CLASS OR104 COMPARING 'AS-IS' VS 'SCENARIO 6'



AVG BILL OF CLASS OR105 COMPARING 'AS-IS' VS 'SCENARIO 6'



AVG BILL OF CLASS OR111.COM COMPARING 'AS-IS' VS 'SCENARIO 6'**AVG BILL OF CLASS OR111.IND COMPARING 'AS-IS' VS 'SCENARIO 6'****AVG BILL OF CLASS OR170 COMPARING 'AS-IS' VS 'SCENARIO 6'**